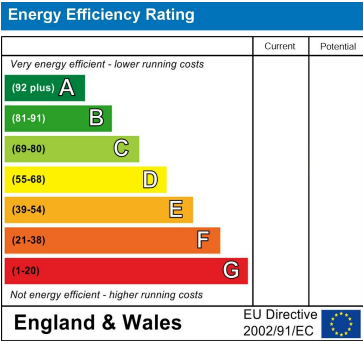


Council Tax Band

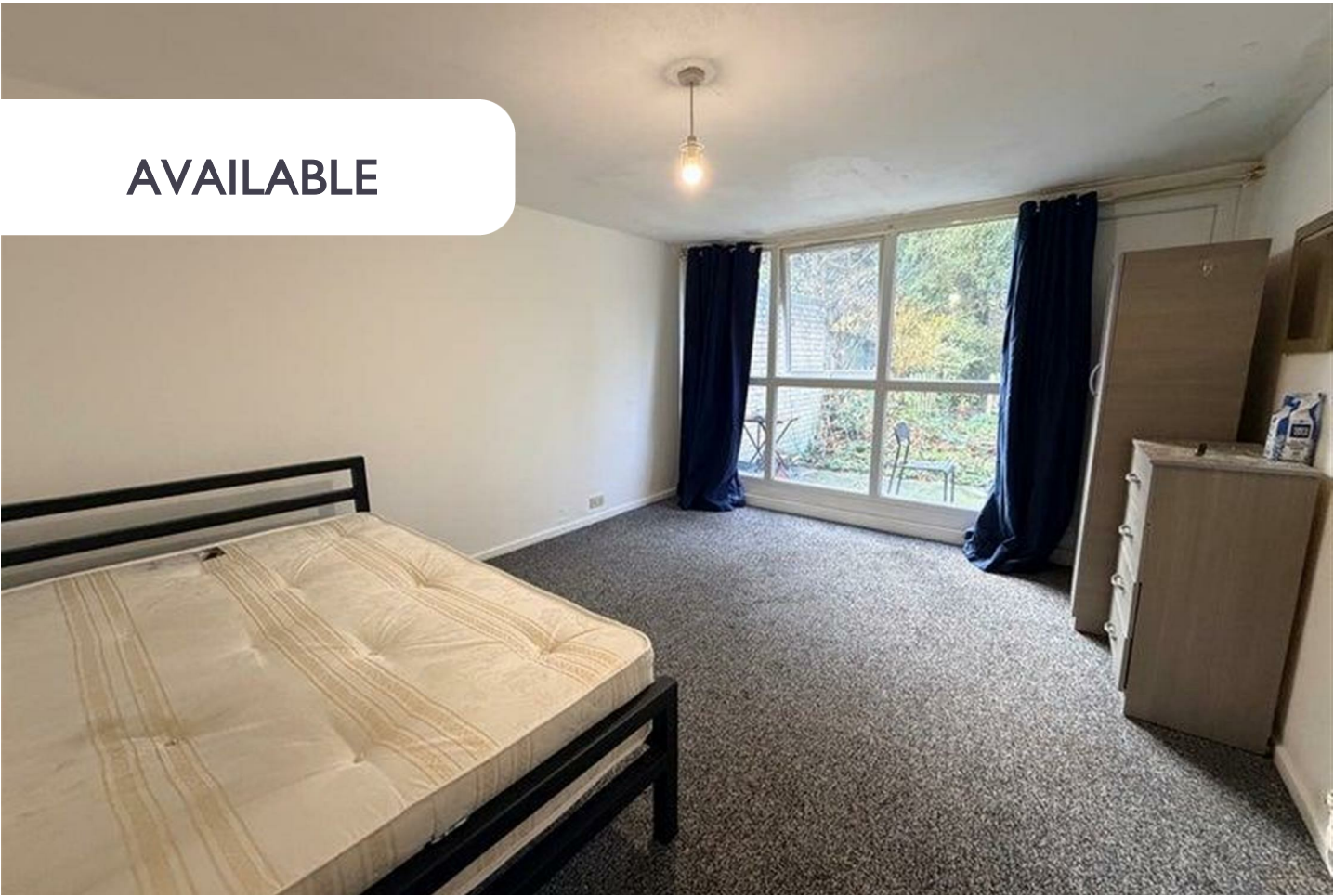
Energy Performance Graph



Call us on  
**02078460308**  
**info@stonebanks.co.uk**  
**www.stonebanks.co.uk**

Agents Note: Whilst every care has been taken to prepare these particulars, they are for guidance purposes only. All measurements are approximate and are for general guidance purposes only and whilst every care has been taken to ensure their accuracy, they should not be relied upon and potential buyers are advised to recheck the measurements.

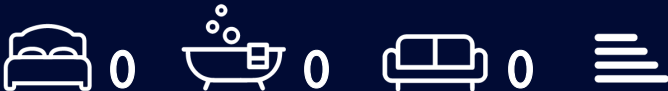
AVAILABLE



HOUSE SHARE (EPC RATING: )

**21 SANCTUARY CLOSE, HAREFIELD, UB9 6LJ**

**£750**





# 0 Bedroom House Share located in Harefield

Spacious 5-Bedroom Terraced House in a Prime Denham Location , suitable for company let.

Situated in the desirable area of Denham, UB9, this spacious five-bedroom terraced house is available to rent and offers a fantastic opportunity for larger families or those seeking versatile living arrangements. With its practical layout, this property combines comfort and convenience in a sought-after neighborhood.

The house features five well-proportioned bedrooms, providing ample space for family members or housemates. Two kitchens offer flexibility for multi-generational living or for those who enjoy additional cooking facilities. The family bathroom is thoughtfully designed to meet the needs of a busy household.

Outside, the property includes a private outdoor garden swell as a private balcony on the first floor, perfect for relaxation or casual gatherings. Set within a quiet residential area, the home provides a peaceful retreat while still being close to local amenities.

Local Amenities:  
Denham offers a variety of amenities to cater to everyday needs. Nearby, you'll find supermarkets, independent shops, cafes, and restaurants. For leisure, the beautiful Colne Valley Regional Park is a short distance away,



Stonebanks | 22a Northfield Avenue, Ealing, London, W13 9RL

Stonebanks | 22a Northfield Avenue, Ealing, London, W13 9RL